



Total Solution Provider in Saw Device

SL7006D

70.0 MHz IF SAW Filter

5.6 MHz Bandwidth

Revision 1 : 29. Oct. 2007



- Electrical Characteristics
 - Package Dimensions
 - Testing Environment
 - Frequency Characteristics
-

SAWNICS Inc.

460 Cheonheung-ri, Seonggeo-eup, Cheonan-si, Chungcheongnam-do, 330-836 / Korea.
Tel: +82 41 550 9372 / Fax: +82 41 550 9399 / www.sawnics.com

□ Electrical Characteristics

Maximum Ratings

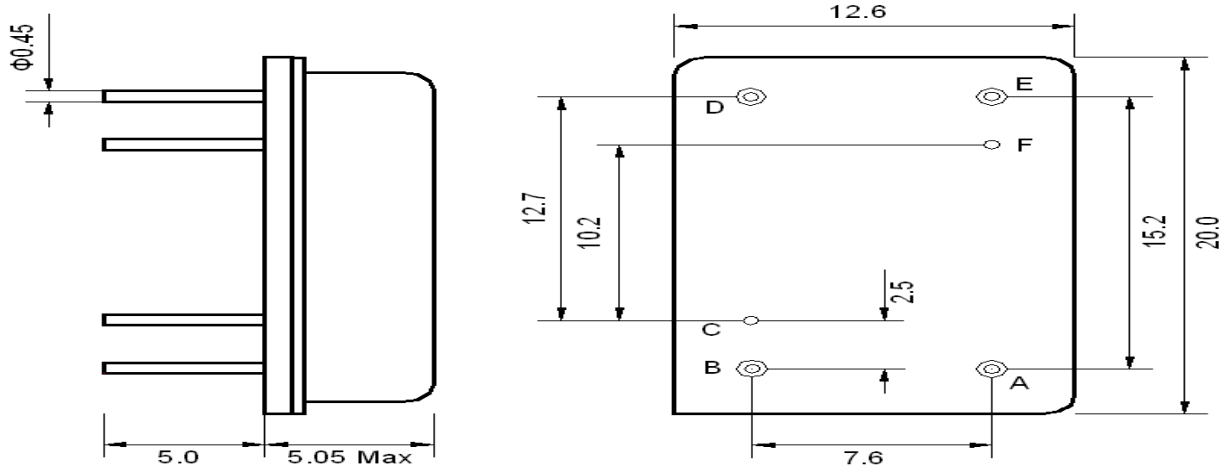
| Parameters Description | Unit | Minimum | Typical | Maximum |
|--|-----------------|---------|-------------|---------|
| Operating Temperature Range | °C | -30 | - | 80 |
| Storage Temperature Range | °C | -40 | - | 85 |
| Maximum DC Voltage | V | - | - | 10 |
| Maximum Input Power | dBm | - | - | 10 |
| Source Impedance (single ended) ⁽¹⁾ | Ω | - | 50 | - |
| Load Impedance (single ended) ⁽¹⁾ | Ω | - | 50 | - |
| Package type & size | D | | | |
| Length x Width | mm ² | - | 20.0 x 12.6 | - |
| Height | mm | - | - | 5.05 |

Electrical Specification

| Parameters Description | Unit | Minimum | Typical | Maximum |
|--|-------------------|---------|---------|---------|
| Center Frequency (Fo) | MHz | 69.8 | 70.0 | 70.2 |
| Insertion Loss at Fo | dB | - | 8.2 | 9.0 |
| Temperature Coefficient | ppm/°C | - | -94 | - |
| Amplitude Ripple Variation at Fo ± 2.1 MHz | dB _{p-p} | - | 0.7 | 1.0 |
| Group Delay Variation at Fo ±2.0 MHz | nsec | - | 110 | 150 |
| Absolute Delay at Fo | µsec | - | 0.85 | - |
| IN/OUT Return Loss at Fo | dB | - | - | - |
| Bandwidth at -1.0 dB | MHz | 5.2 | 5.6 | - |
| Bandwidth at -3.0 dB | MHz | 6.0 | 6.5 | - |
| Bandwidth at -40.0 dB | MHz | - | 9.5 | 10.0 |
| Relative Attenuation: | | | | |
| from 10 to 64.5 MHz | dB | 40 | 45 | - |
| from 75.5 to 140 MHz | dB | 40 | 43 | - |

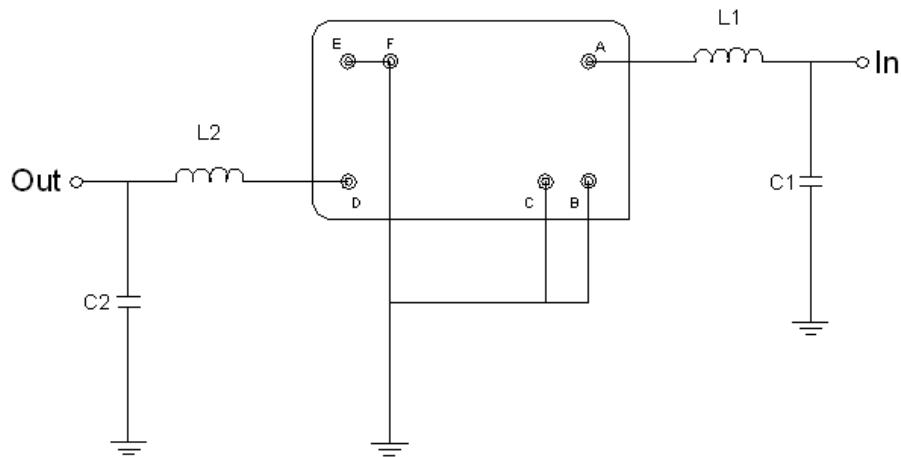
Notes : (1) With Matching Network (Ref. Testing Environment Circuit as shown below).
Those impedances could be modified with different impedance values and/or structures, if necessary.

□ Package Dimensions



| Pin Description | |
|-----------------|--------|
| B,C,E,F | Ground |
| A | Input |
| D | Output |

□ Testing Environment



| Test Fixture & Values | |
|-----------------------|-----------------------|
| Input | L1=TBD Q >40, C1=TBD |
| Output | L2=TBD Q.>40 , C2=TBD |
| Source/Load Impedance | 50 Ω |

□ Frequency Characteristics

Frequency Response

